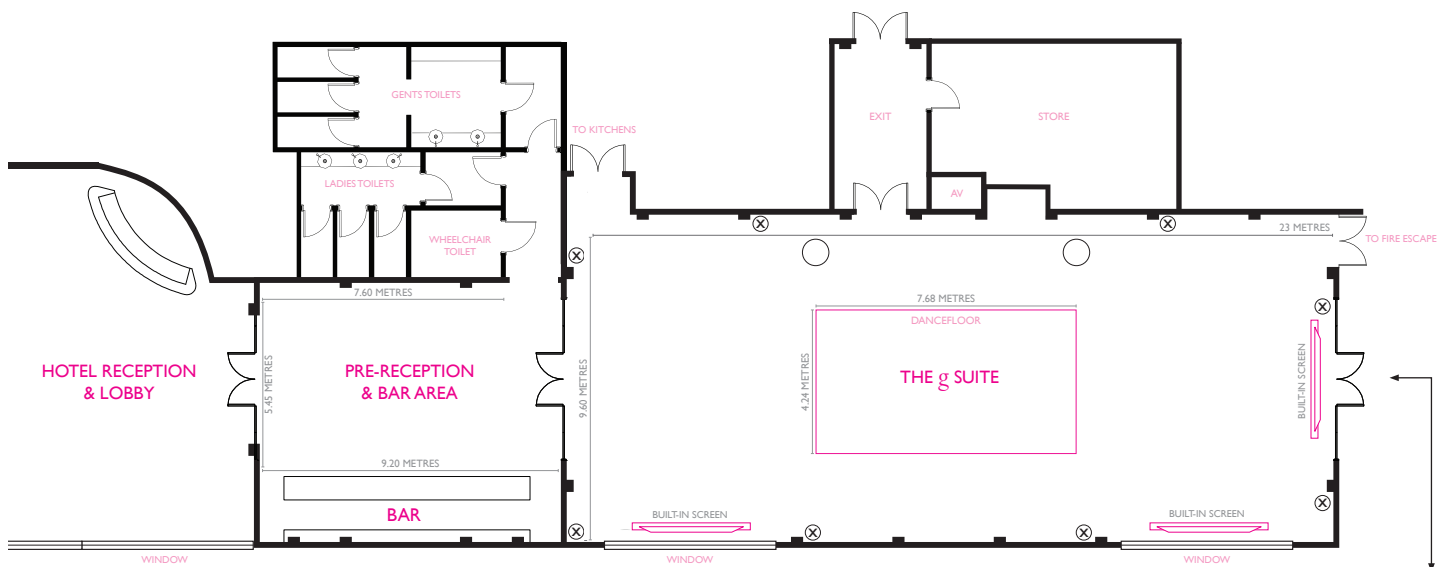


# MEETING & EVENT CAPACITIES

CAPACITY CHART		Event Suite	Boardroom	g1 Syndicate Room	g2 Syndicate Room	g3 Syndicate Room	g4 Syndicate Room
Theatre		300	N/A	20	20	N/A	N/A
Banquet		180	20	N/A	N/A	N/A	N/A
Boardroom		70	20	14	14	8	8
Classroom		70	N/A	N/A	N/A	N/A	N/A
U-shape		40 (based on screens)	N/A	N/A	N/A	N/A	N/A
Hollow square		60	15	N/A	N/A	N/A	N/A
Cabaret		120	N/A	N/A	N/A	N/A	N/A

## g SUITE FLOORPLAN



### EVENTS SUITE AUDIO VISUAL TECHNICAL SPECIFICATIONS

#### SOUND

- 4 x LD systems Maui | I sound towers (mini line array)
- 1 x Mackie 1642vl, 16ch sound desk
- 2 x Jts wireless handheld microphones
- 1 x sennheiser wireless headset microphone
- 1 x transec wireless headset microphone
- 1 x Shure podium microphone

#### PROJECTORS/SCREENS

- 2 x NecV300sg HD 3d projectors - 3000 lumens (side wall)
- 1 x BenQ Mx613st HD projector - 3000 lumens (end wall)
- 2 x 8ft 16:9 projector screens (side wall)
- 1 x 7ft 16:9 projector screens (end wall)
- 1 x HDMI matrix switcher
- 1 x Podium c/w VGA, HDMI and mini jack input.

#### OTHER

- 3 Pieces of stage – 2.44m wide x 1.83m deep
- 1 x HD Blu-ray player
- Complimentary WiFi
- Power & Data points ⊗
- ISDN Line
- Private WIFI network available

### LOAD-IN DOOR DETAILS

